

ASSEMBLY HOUSE - AVAILABLE STUDIOS

ABOUT ASSEMBLY HOUSE

Assembly House is an artist-led community arts organisation, project space and studios, in Armley, Leeds. We have a strong commitment to professional development and providing a vital platform and support structures to early career artists and creatives in our city. We define early career artists as anyone who is at the start of their career, or in the process of developing their career, regardless of their age or educational training. Led by people with diverse lived experiences, we're passionate about supporting cross-disciplinary practices, and creating essential opportunities that remove barriers to arts engagement for those who need it.

ABOUT THE STUDIOS

We currently have a community of nearly 70 artists working in our studios. Each artist has a different practice, ranging from painting, sculpture, textiles, photography, sound, performance, wood and metal work, and more. Our studios are non-lockable with an open feel and our artist community thrives on collaboration and a welcoming atmosphere. As part of our commitment to supporting early career artists we provide a range of other services and benefits as part of your membership. These are:

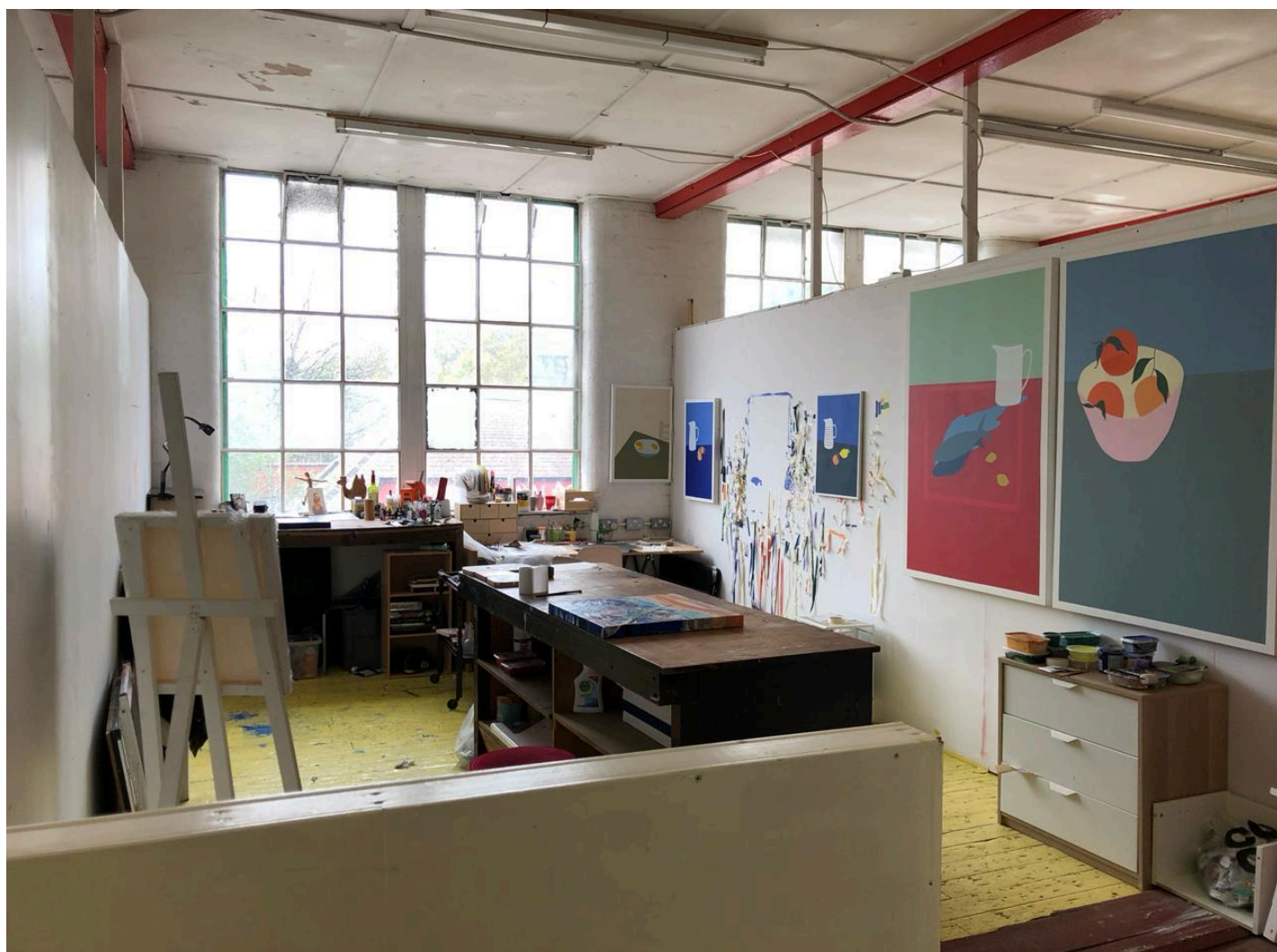
- Funding bid and application writing support and mentoring
- Woodworking and technical training and access to workshop tools
- Supported opportunities to exhibit in our main programme
- Paid opportunities to work on our community programme
- Free hire of our project space
- Group crit sessions
- Inclusion in our annual group exhibition
- Promotion through our website and social media channels
- Free / discounted tickets to our various events and workshops

We also have some flourishing social groups, such as a book club, allotment group chat, Minecraft server, regular group trips and potlucks, as well as an annual Christmas party.

We are expanding into a new unit of our building, which means we have around 15 new studio spaces to fill, available on 4th May!

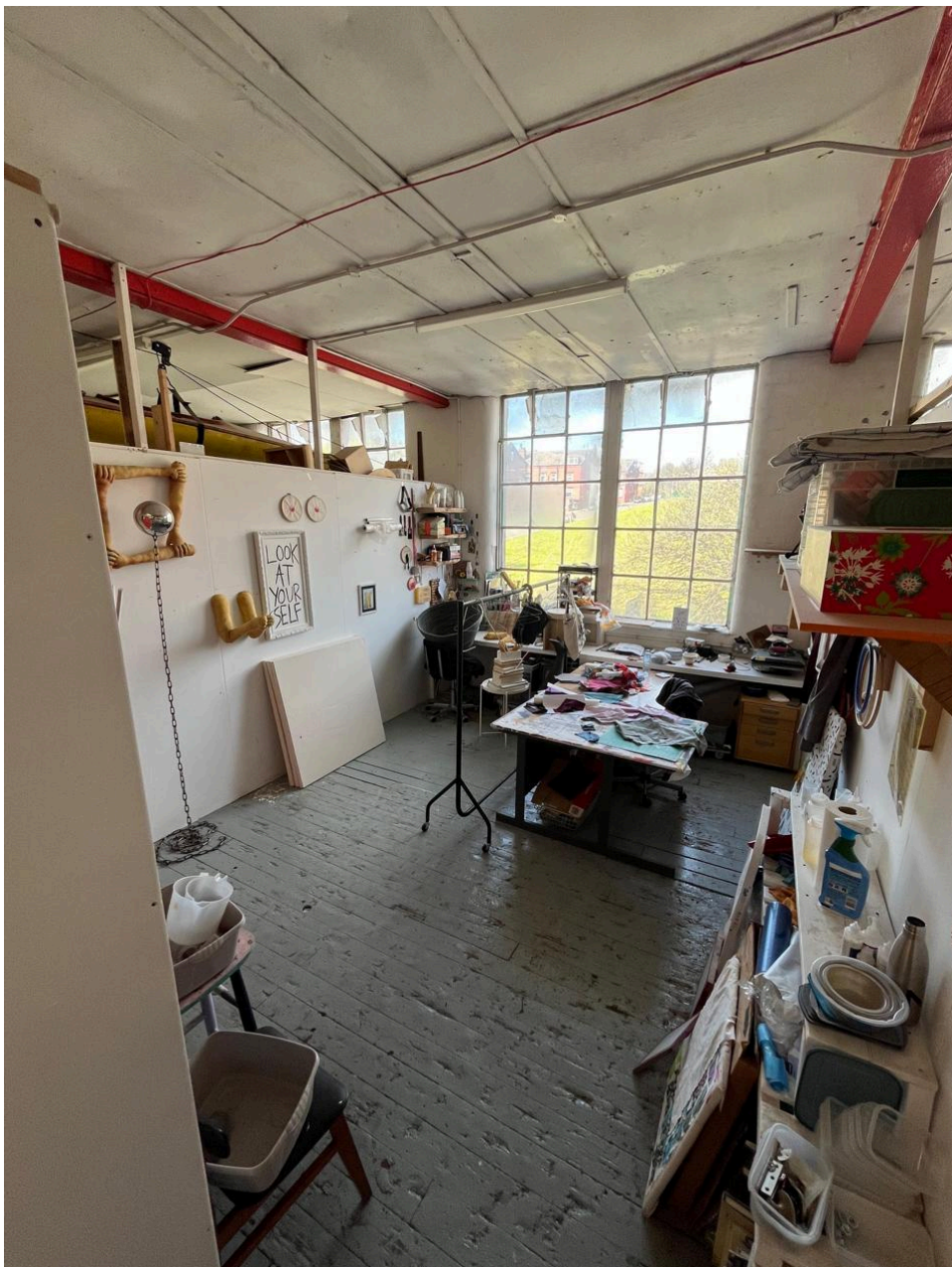
STUDIO A

These studios are available from 1st May 2026. These studios are 6.66m x 3.8m and are on the second floor of our building. They are light and airy spaces with a window each letting in lots of natural light. They have 4 plugs per studio and 2 large walls. There is a paint sink on the same floor as the studio and a small kitchen area. A solo studio can be leased for **£250**, or can be shared with one other person for **£150**.



STUDIO B

These studios are available from 1st May 2026. These studios are 5.45m x 3.8m and are on the second floor of our building. They are light and airy spaces with a window each letting in lots of natural light. They have 4 plugs per studio and 2 large walls. There is a paint sink on the same floor as the studio and a small kitchen area. A solo studio can be leased for **£235**, or can be shared with one other person for **£140**.



OTHER STUDIOS

There may be other studios in our existing units becoming available, which will be at a similar price range to the above studios and allocated on a case by case basis.

PRACTICAL INFORMATION

Assembly House is on the first and second floor of our building. It is accessible by a flight of stairs. Once in the building there is another flight of stairs between the two floors. The first floor is 2 small steps to access the main toilets and the project space. The second floor has no steps. The flooring is uneven in some areas of the building. The light levels, colours and sound levels change throughout the building and depending on what activity is happening.

Our kitchen is equipped with a hob, oven, air fryer, microwave, kettle, fridge, freezer, cutlery, plates and cups.

We have on site parking that is shared with the other businesses in the building. We are also located along several bus routes and close to many more. You can also walk to Assembly House from town in 20-25 minutes, and from Burley in 20 minutes.

HOW TO APPLY

We welcome applications from any artist who fits the broad definition of early career. We are always interested to hear from artists who may have had a non-traditional route into creativity, or who have faced barriers to the industry. You do not have to have studied at university or have studied art at university. You do not have to be a 'professional' (earning all of your money from your art practice) but you might be! We would also like to hear from artists and creatives who feel they would benefit from the community aspects of the studio.

[To apply, please complete our short application form.](#)

This deadline to apply is 19th April at midnight.

We will get back to applicants on the w/c 27th April.

We are really interested to hear about you and your work, what interests you and what motivates you to want a studio - please don't feel that your application must be very formal or academic. We also ask that you give us enough information to assess your application. Applications with only a short sentence as an answer make it hard to understand you and your work.

Studio applications are selected based on votes from our existing 65 studio members, as well as suitability of the

practice within the space. Please only apply if you intend to accept the offer of a studio space. This avoids unnecessary work for the team and ensures a smooth process for everyone involved.

If you have any questions, please send them to info@assemblyhouse.art. Please note that replies can take up to 7 days.