

MODEL ARMLEY #4

Mike's Carpets

First colour in your model. Use whatever colours you'd like!

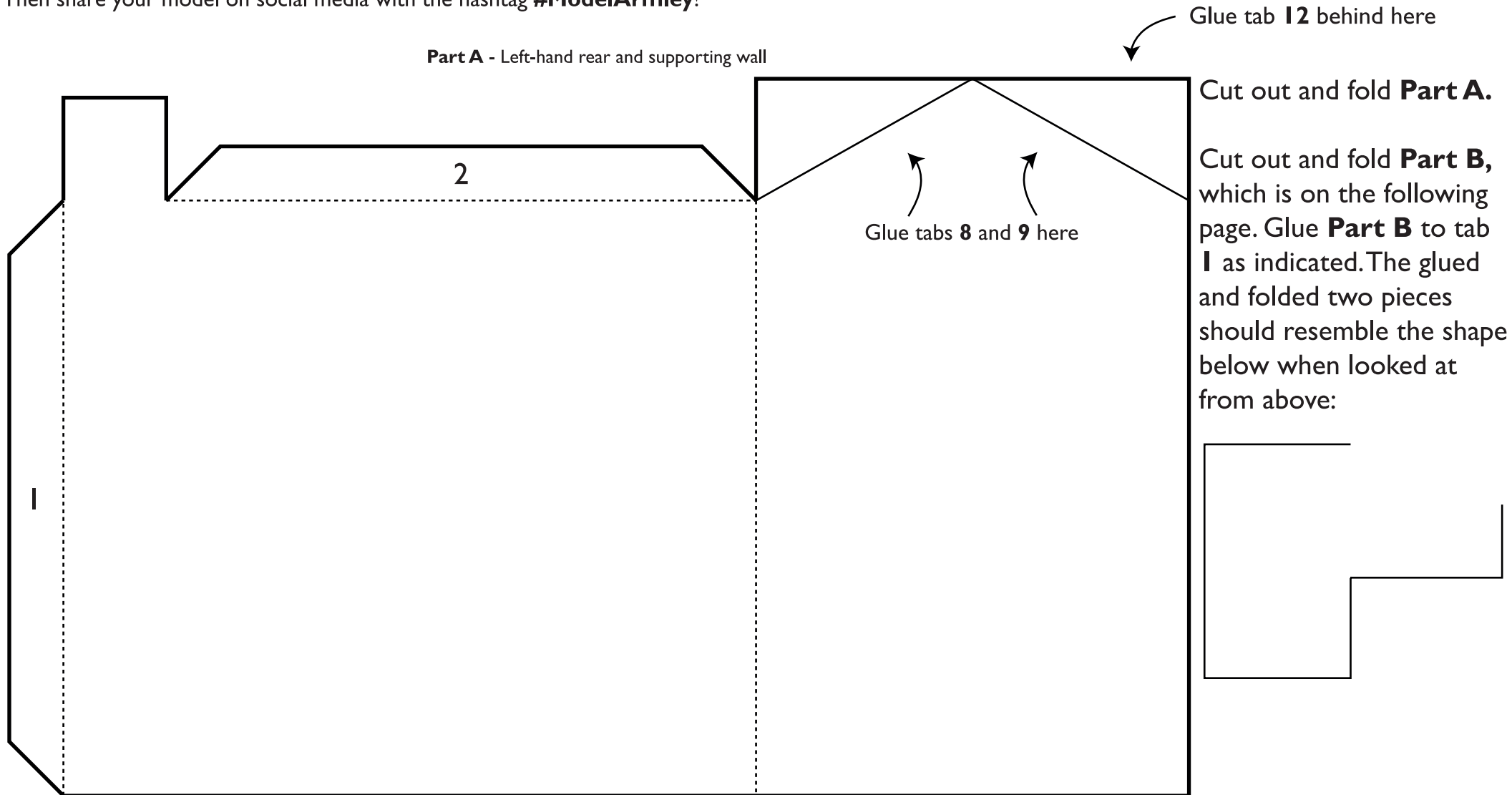
Then, following the instructions, cut out each part, folding and gluing together to assemble the model.

Then share your model on social media with the hashtag **#ModelArmley!**

Remember!

Cut along thick lines 

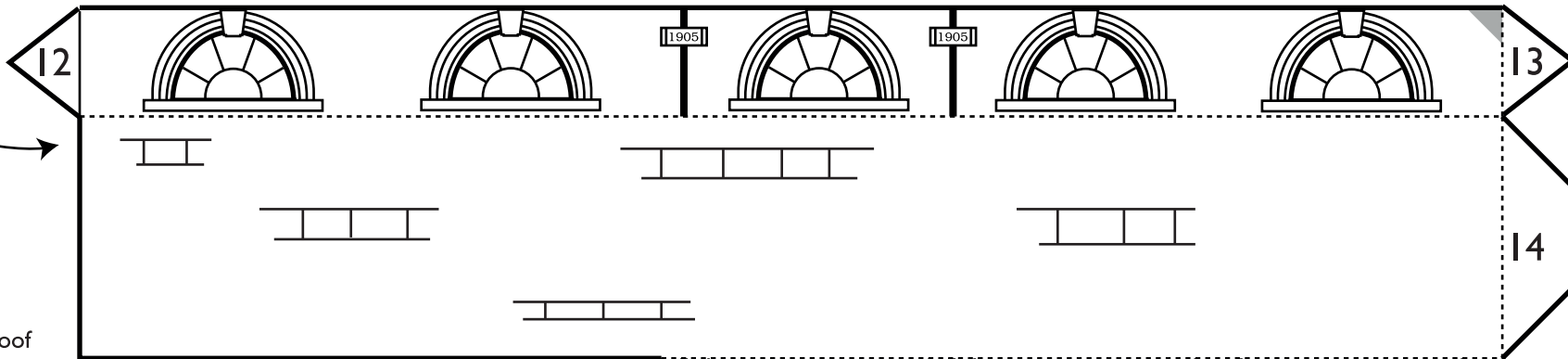
Fold along dashed lines 



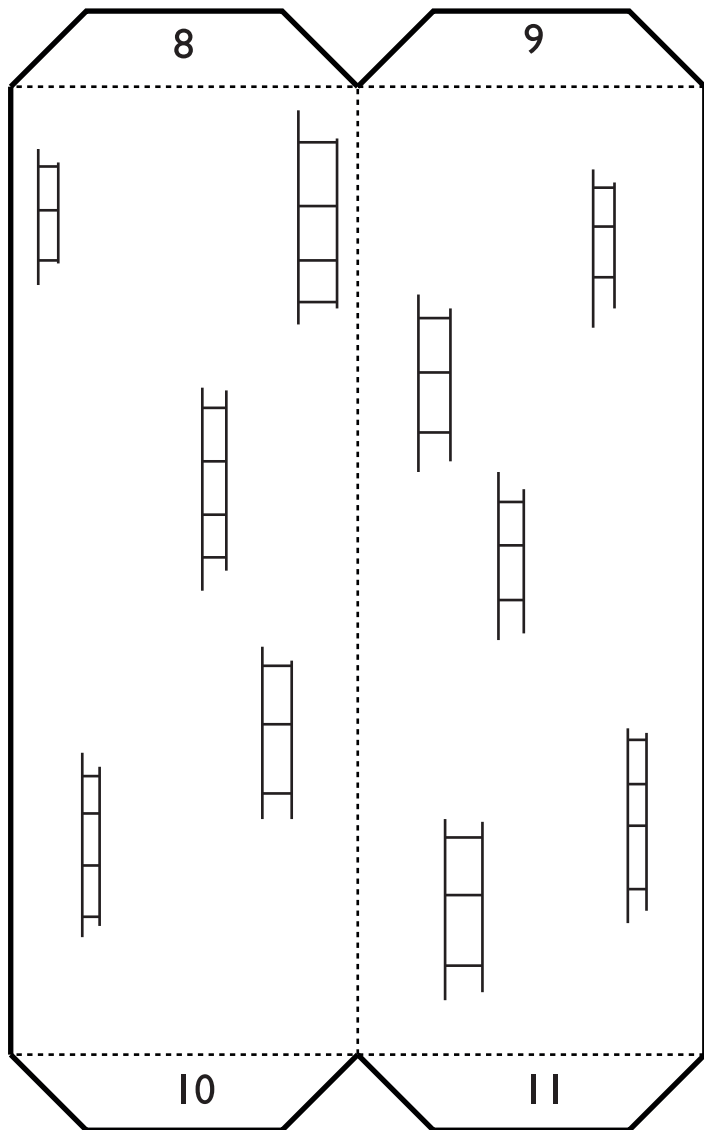
Now glue down the *Small Roof* section to the narrow panel with the corner of tab 5 meeting tab 7 as indicated



Part D - Left-hand long wall

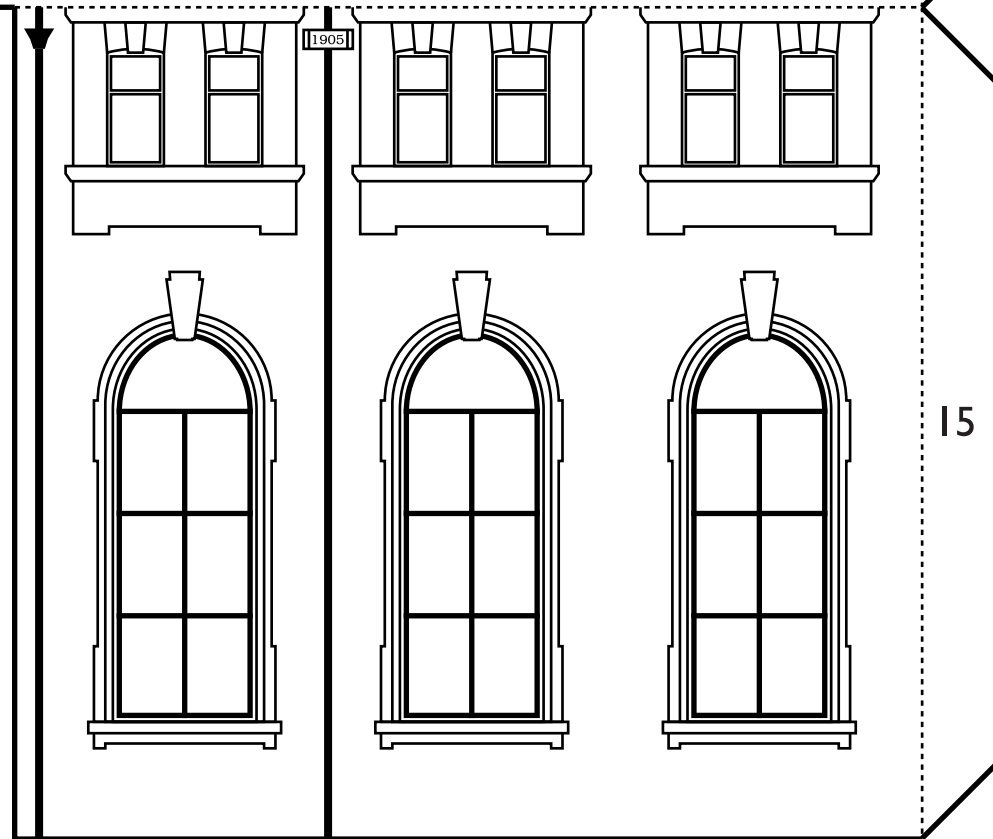


Part C - Left-hand roof

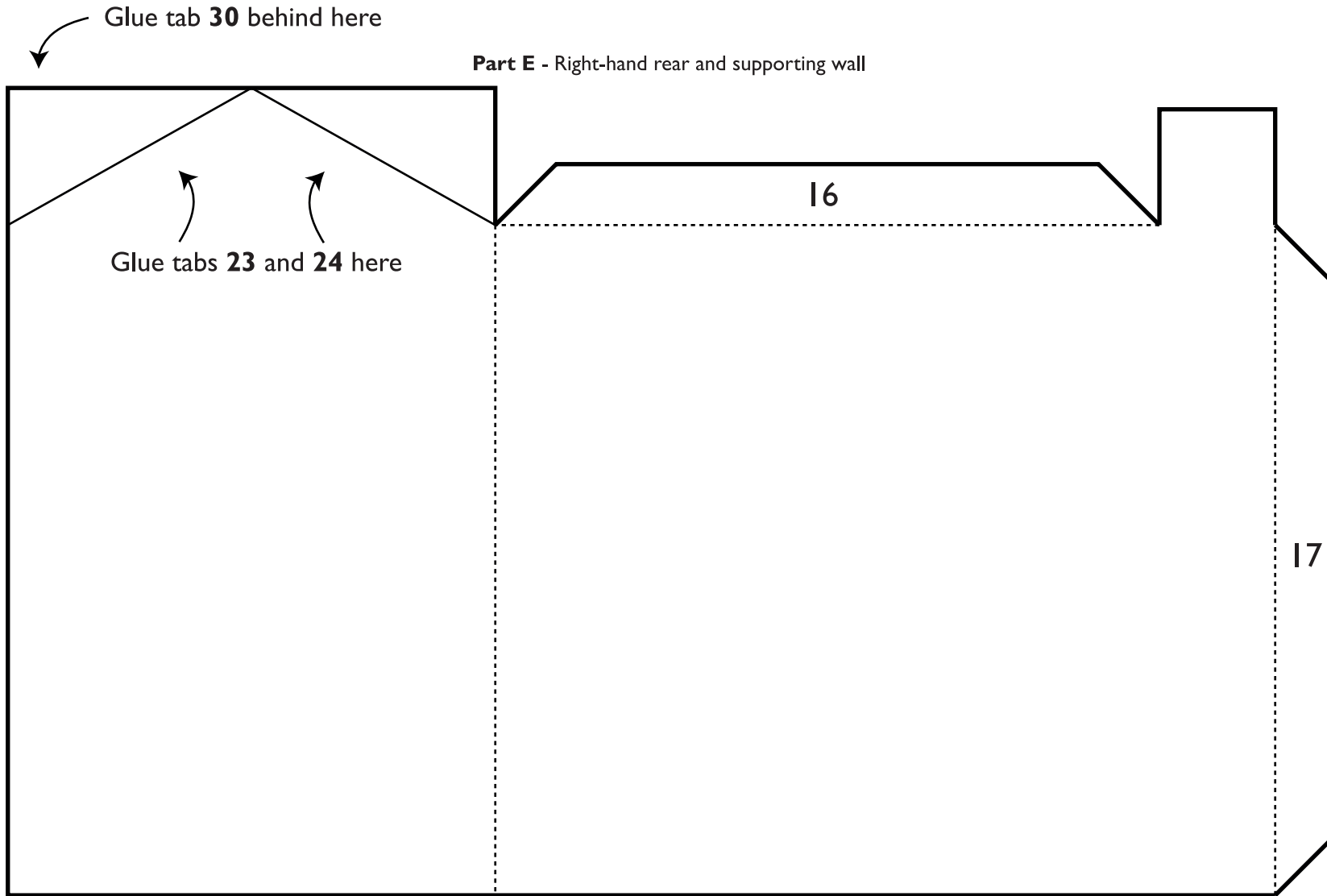


Cut out and fold **Part C** and glue to **Part A** with tabs **8** and **9** lining up as indicated. The main body of the roof should be glued to tabs **2** and **3** with tabs **10** and **11** glued to **Part B**.

Glue tab **7** here



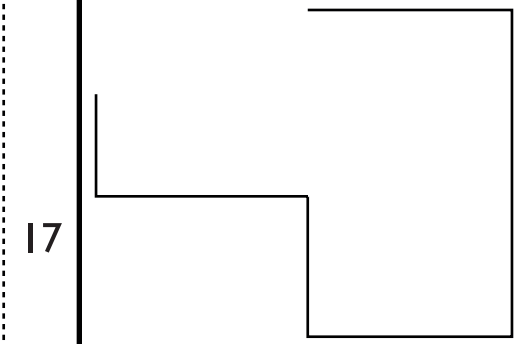
Cut out and fold **Part D** and glue to tab **7** as indicated. Glue tab **12** to **Part A** as indicated on the first page. This wing of the building is now complete.



Part E - Right-hand rear and supporting wall

Cut out and fold **Part E**.

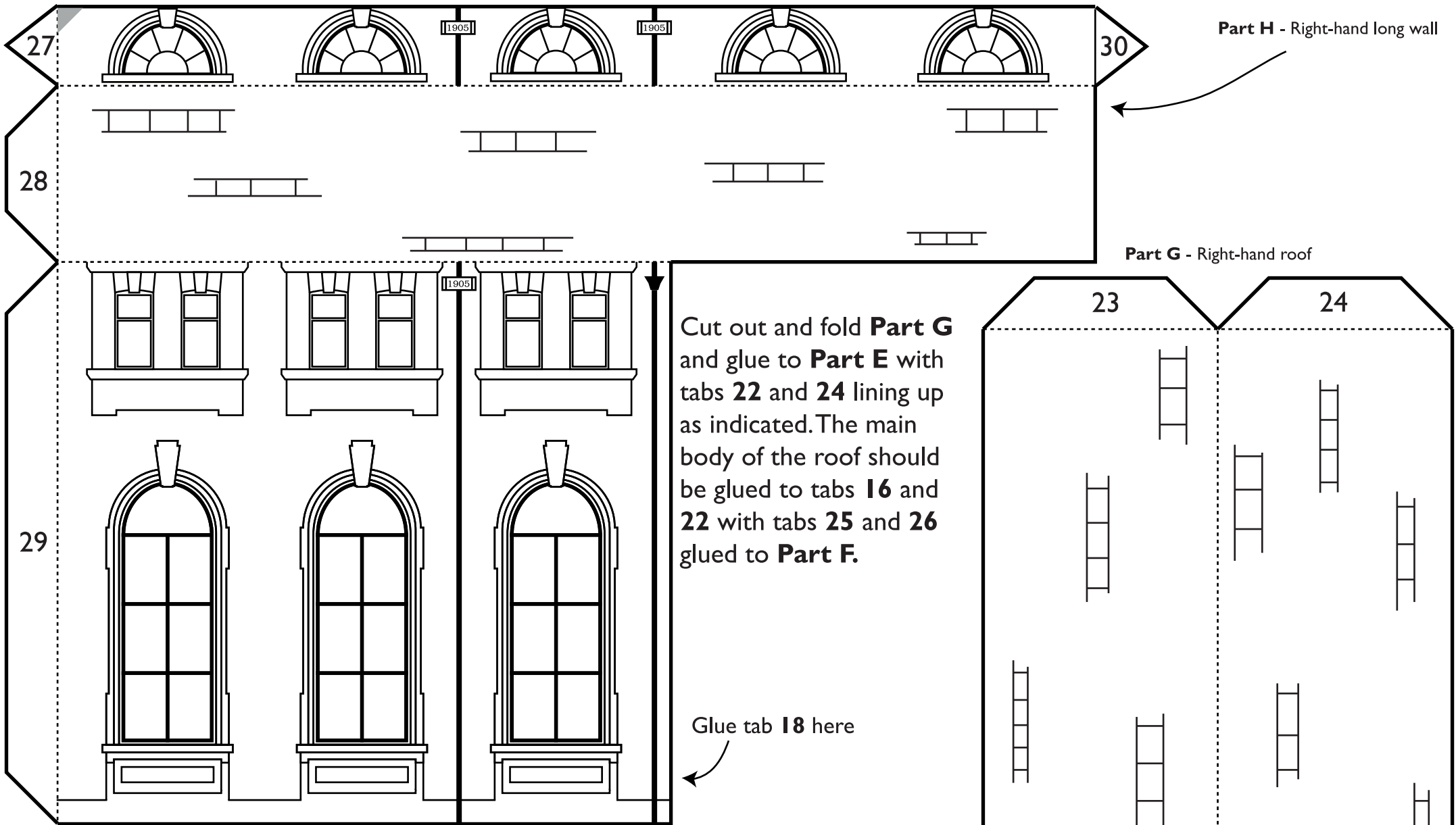
Cut out and fold **Part F**, which is on the following page. Glue **Part F** to tab **17** as indicated. The glued and folded two pieces should resemble the shape below when looked at from above:



This will become the other wing of the building, which is a mirror image of the first.

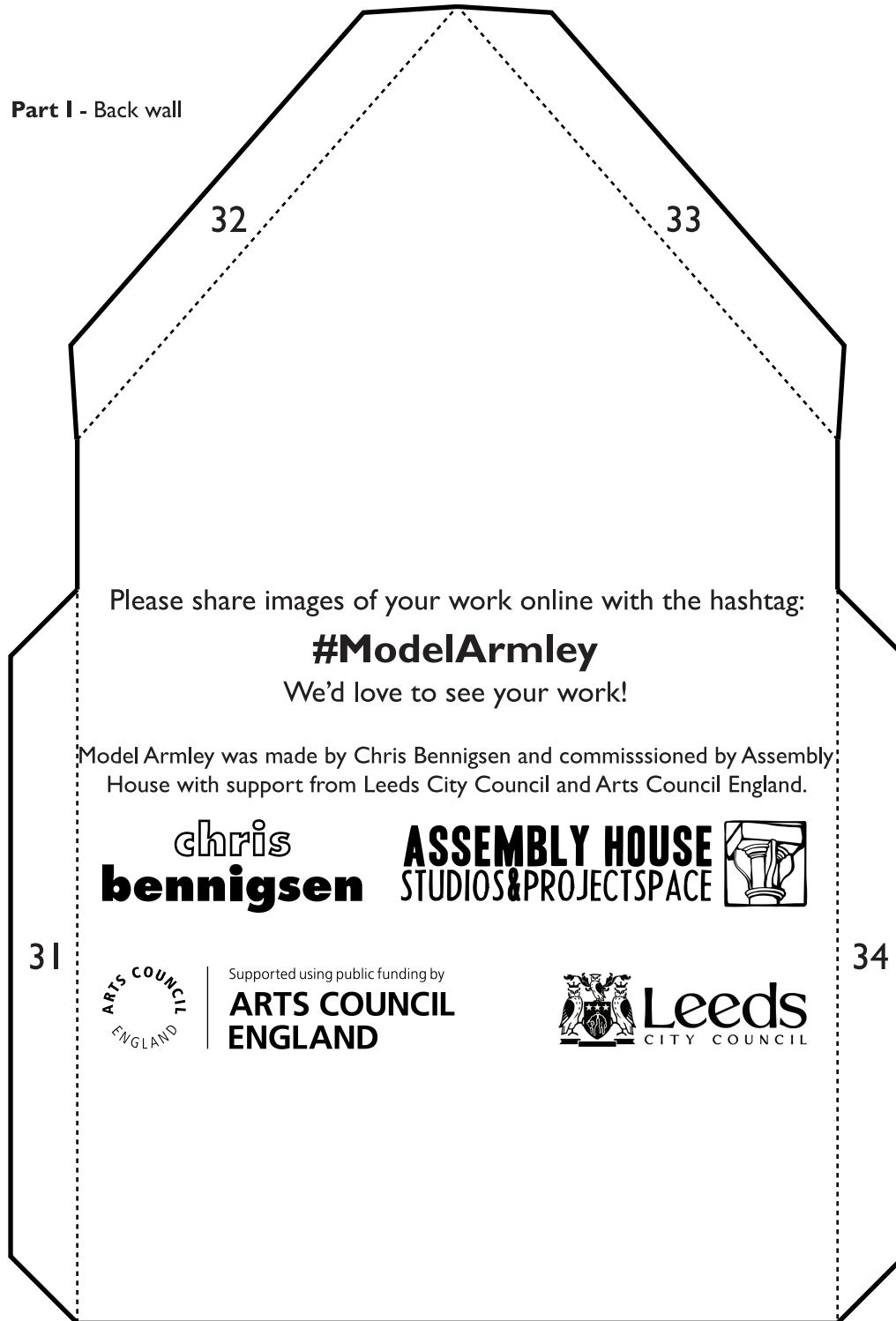
Now glue down the *Small Roof* section to the narrow panel with the corner of tab **20** meeting tab **18** as indicated





Cut out and fold **Part H** and glue to tab **18** as indicated. Glue tab **30** to **Part A** as indicated on the first page. The second wing of the building is now complete.

Part I - Back wall



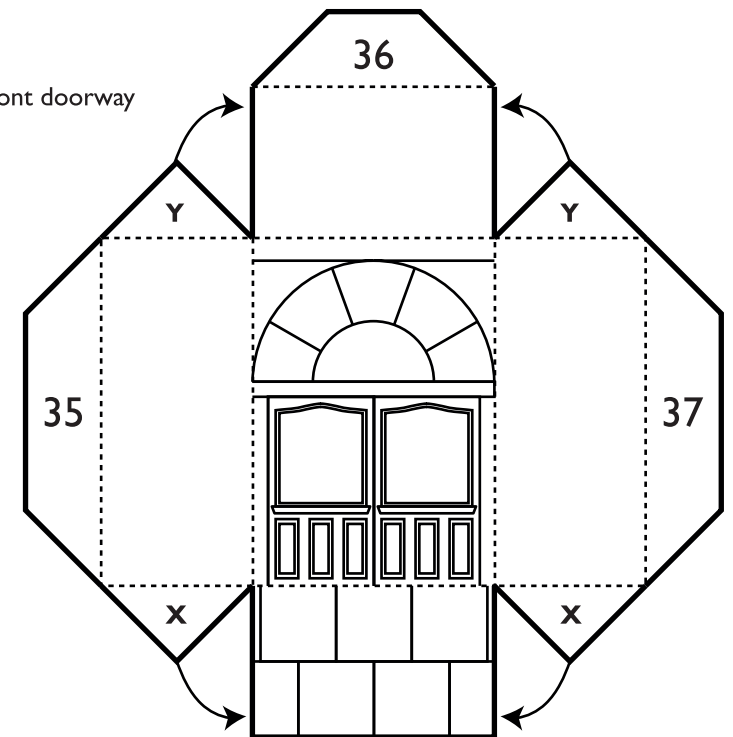
Cut out and fold **Part H**.

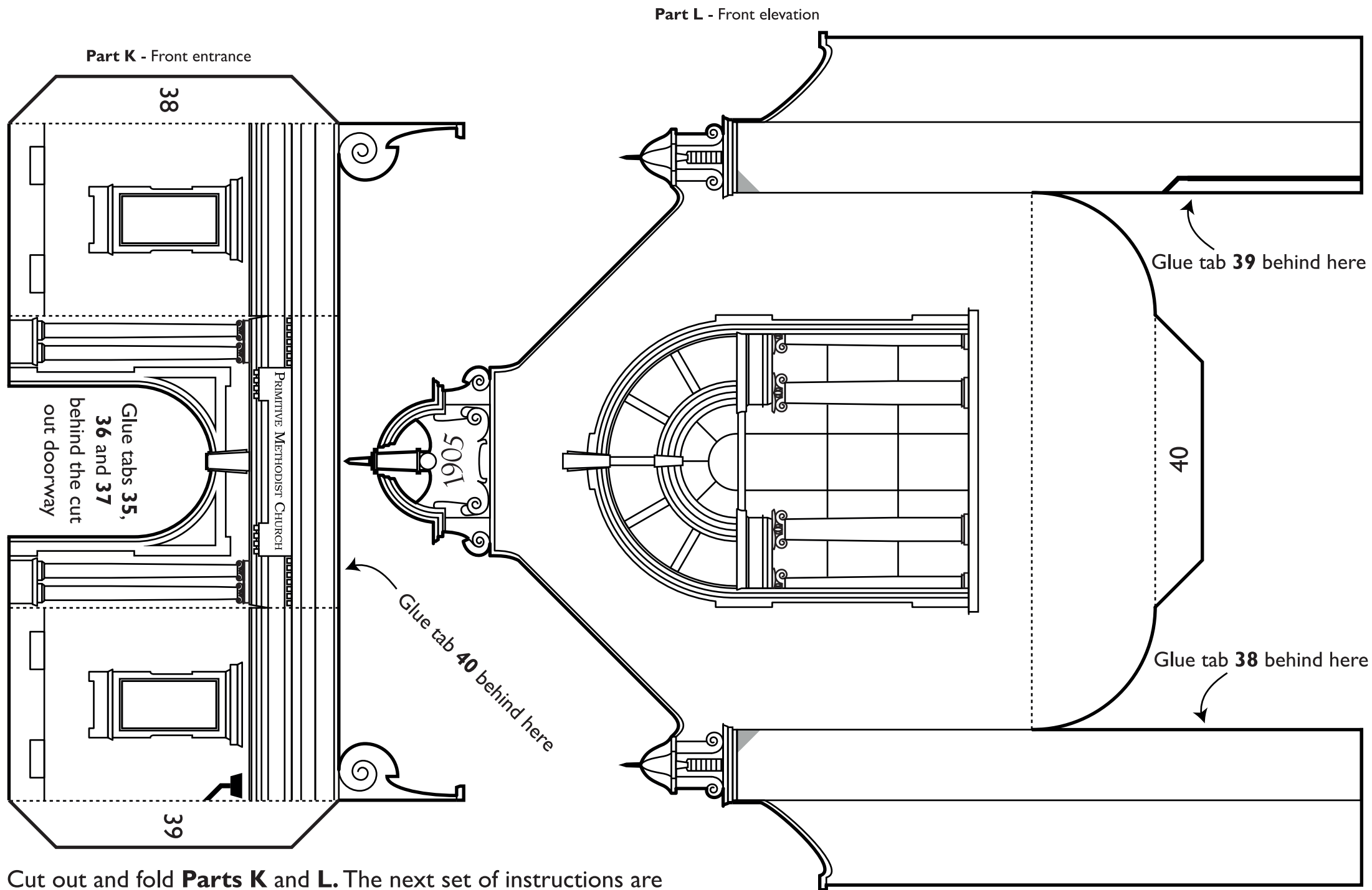
Connect the two wings by gluing tab **34** to **Part A** and tab **31** to **Part E**, so the text faces outward and the bent tabs **32** and **33** are facing inward.

Cut out and fold **Part J**. Glue the two small tabs marked **X** under the bottom flap as indicated by the arrows. Then glue the two small tabs marked **Y** above the top flap as indicated. You should have now formed a little box.

Leave to one side for the moment.


Part J - Front doorway





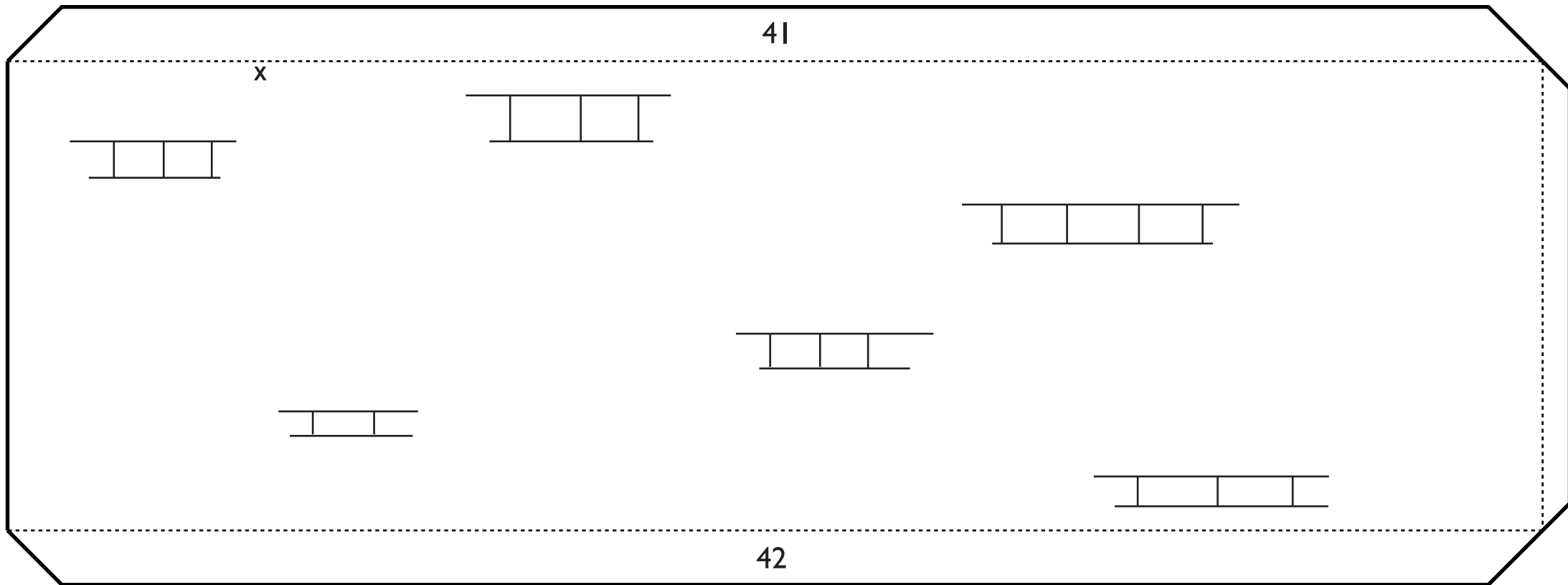
Cut out and fold **Parts K** and **L**. The next set of instructions are on the following page.

First attach **Part J** to **Part K** by gluing tabs **35**, **36** and **37** behind the cut out doorway in **Part K**. Now attach the completed entrance to front elevation by gluing tabs **39** and **38** behind **Part L** as indicated. Then glue tab **40** behind the **Part K**. The front entrance and elevation should now be completed.

Glue this assembled part to tabs **15** and **29**. Also glue tabs **13**, **14**, **27** and **28** to the completed front too, ensuring that the grey triangles  on tabs **13** and **27** are lined up correctly with the same grey triangles on **Part L**.

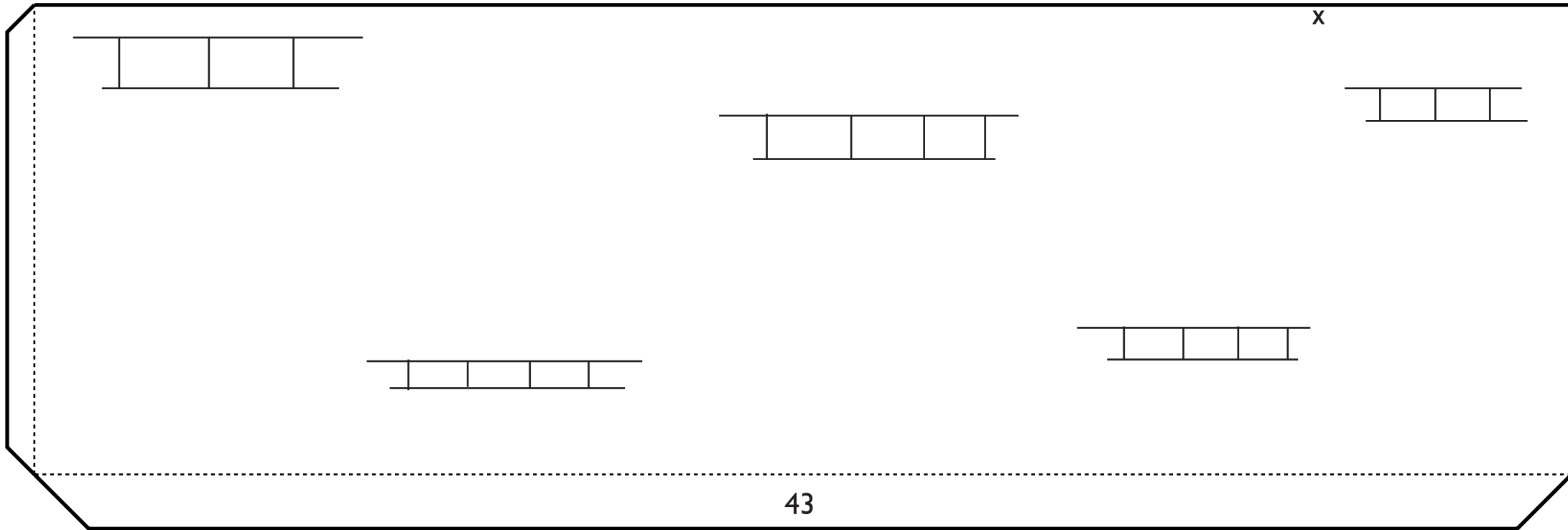
Now cut out and fold **Part M**. Glue the end of the panel to tab **33** and the small tab to the front of the model. Glue tab **42** to the wall of the left wing of the model.

Part M - First roof panel



Now cut and fold **Part N**. Glue the end of the panel to tab **32** and small tab to front elevation as before. Glue tab **43** to the wall of the right wing of the model.

Part N - Second roof panel

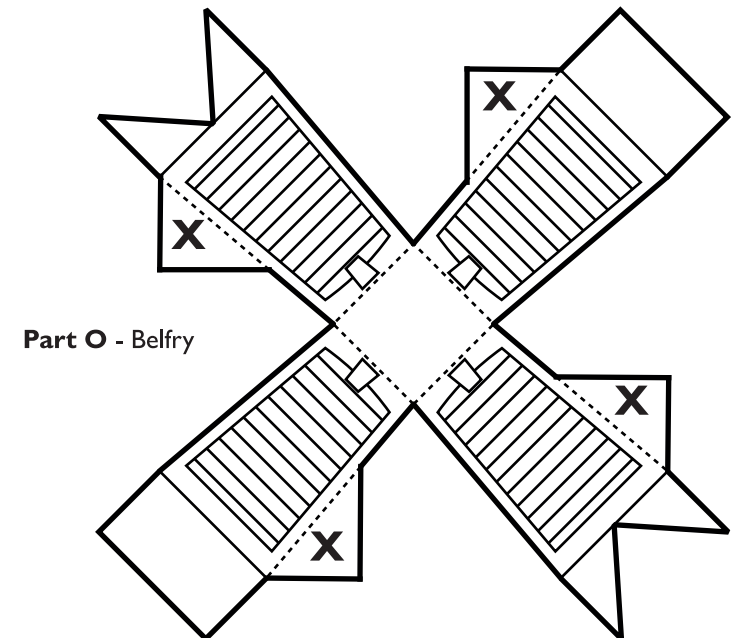


Finally cut and fold **Part O**. Glue the small tabs marked **X** in on themselves to create the structure and then put on top of the completed roof and secure with a dab of glue over the **X** marks on the roof panels.

Your model is now finished!

If you'd like you can decorate you model with the old signs which are on the next page.

Please share photos on social media with the hashtag **#ModelArmley!**



If you want to go old school, add these signs to your model to bring back the glory days.

